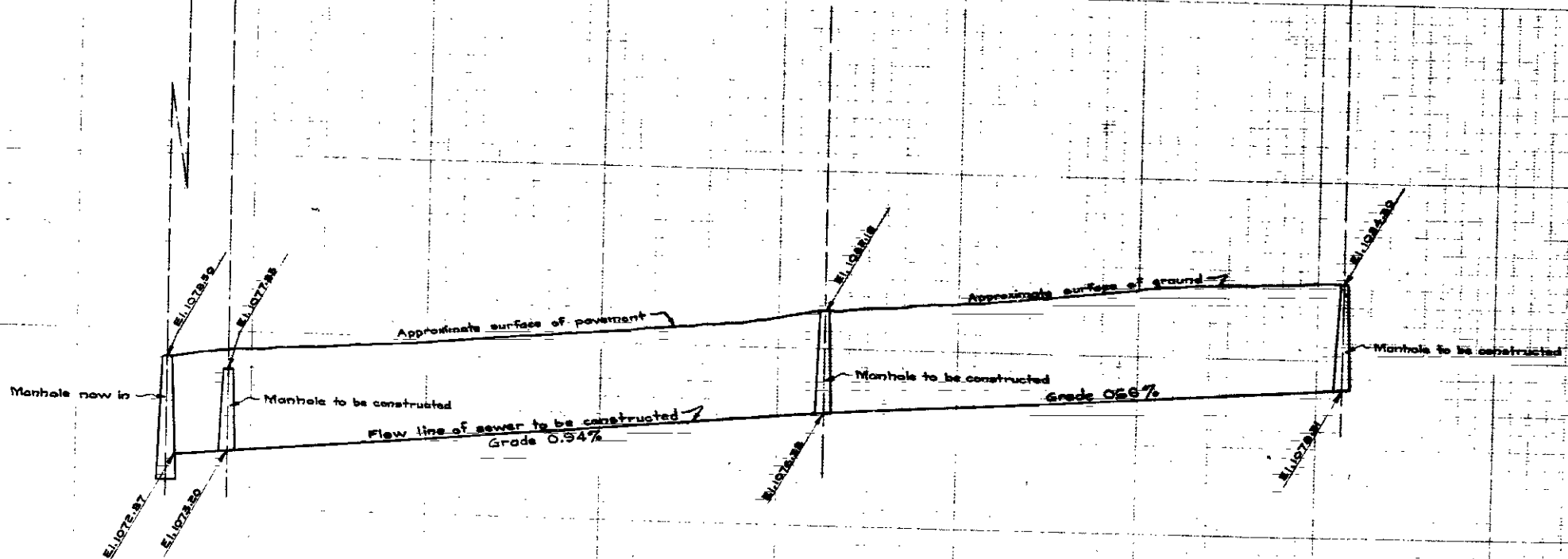


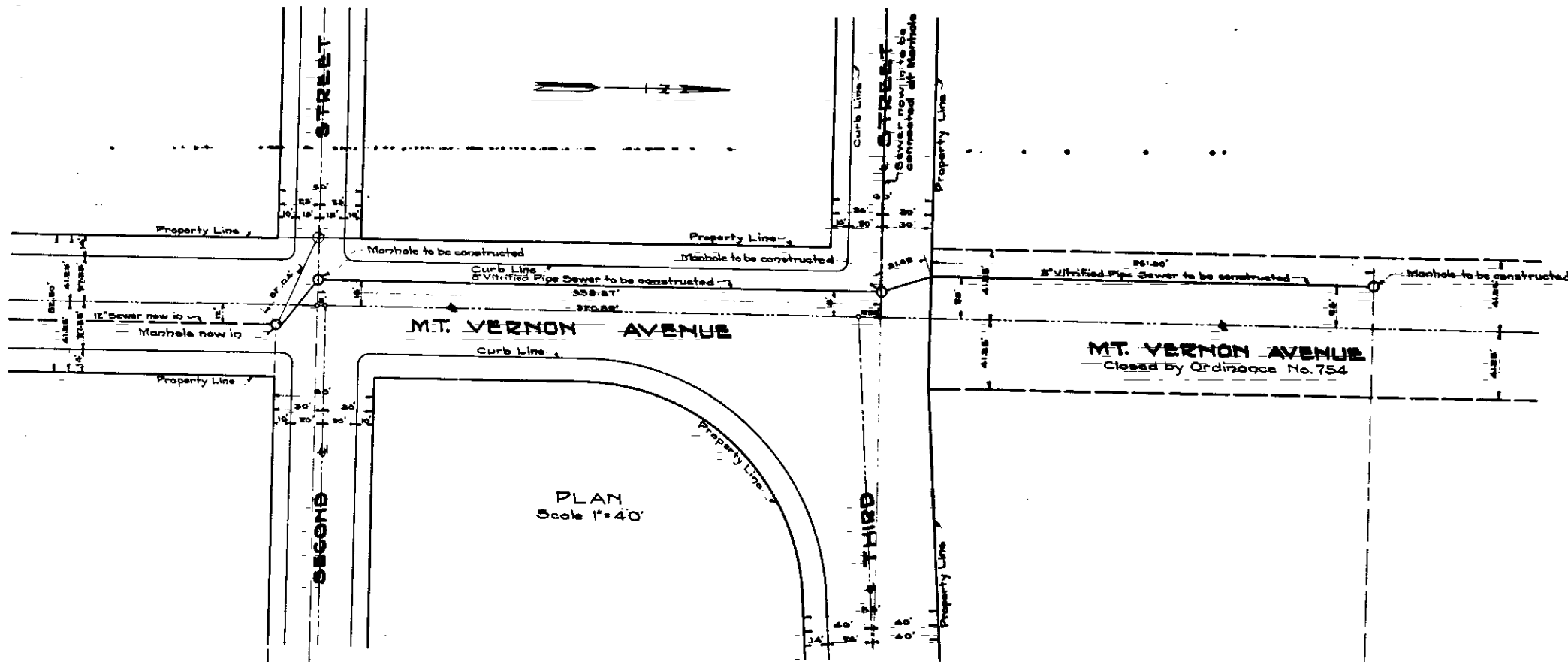
PLAN No 1078
FOR SEWER IN
MT. VERNON AVENUE
 BETWEEN
 THE SOUTH LINE OF SECOND STREET
 AND
 A POINT 261 FEET NORTH OF THE NORTH LINE OF THIRD STREET
 SAN BERNARDINO, CALIFORNIA.
 OCTOBER 1933. GORDON STEWART,
CITY ENGR.



LEGEND	
2" Vitrified Pipe Sewer to be constructed shown thus	—
Standard Brick Manhole to be constructed shown thus	⊙
12" Vitrified Pipe Sewer now in shown thus	—
Standard Brick Manhole now in shown thus	⊙

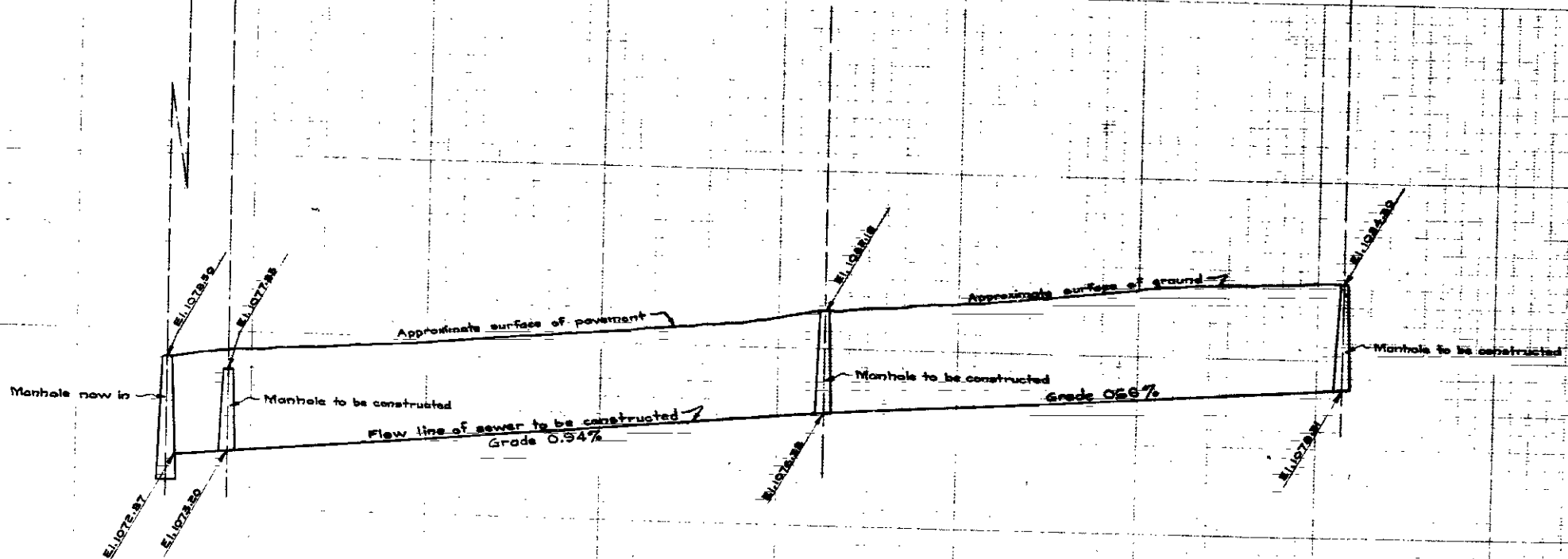
SEWER DETAIL	
Lineal Feet of 2" Vitrified Pipe Sewer including 2" x 4" Wyes	656.55
Number of Standard Brick Manholes	3
Number of 2" x 4" Vitrified Wyes	7
Number of 2" Lateral Connections	7
Lineal Feet of 4" Vitrified Pipe Sewer (Estimated)	100.00

NOTE: All elevations shown are based on L.C.S. B.M. No. 5-88 located at Santa Fe Park. E.I. 1079.345



PLAN No 1078
FOR SEWER IN
MT. VERNON AVENUE
 BETWEEN
 THE SOUTH LINE OF SECOND STREET
 AND
 A POINT 261 FEET NORTH OF THE NORTH LINE OF THIRD STREET
 SAN BERNARDINO, CALIFORNIA.
 OCTOBER 1933.

GORDON STEWART,
 CITY ENGR.



PROFILE
 Scale: Horizontal 1"=40'
 Vertical 1"=4'

NOTE: All elevations shown are based on
 L. O. G. S. B. M. No. 5-88 located at
 Santa Fe Park. E. I. 1079.345

LEGEND

2" Vitrified Pipe Sewer to be constructed shown thus	—
Standard Brick Manholes to be constructed shown thus	⊙
12" Vitrified Pipe Sewer now in shown thus	—
Standard Brick Manhole now in shown thus	⊙

SEWER DETAIL

Lineal Feet of 2" Vitrified Pipe Sewer including 2" x 4" Wyes	656.55
Number of Standard Brick Manholes	2
Number of 2" x 4" Vitrified Wyes	7
Number of 2" Lateral Connections	7
Lineal Feet of 4" Vitrified Pipe Sewer (Estimated)	100.00